

- 1-Introduction to MapInfo
- 2-Map Projections
- 3-Registering Satellite Images with GCPs. (ground control points)
- 4-Another way of creating point data (Importing x-, y- Coordinates to a Map)
- 5-Creating Layers and Layer Features

1-Introduction to MapInfo

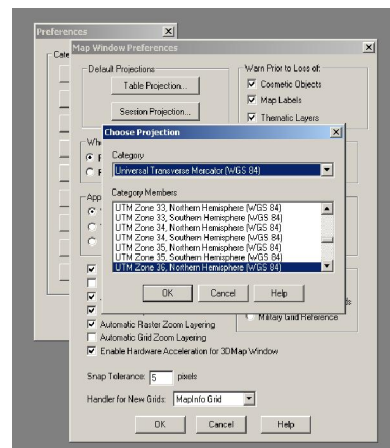
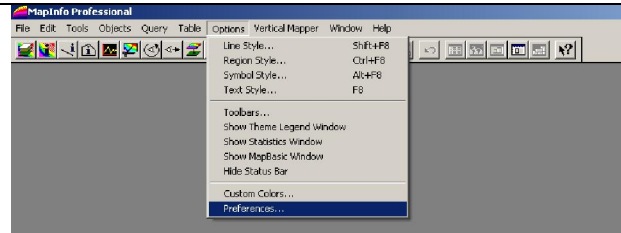
- menus
- toolbars
- registering a Satellite Image
- saving project

2-Map Projections

Options> Preferences > Map Window Preferences >
Table Projection and Session Projection

Choose Universal Transverse Mercator (WGS 84)
ZONE 36 N for both

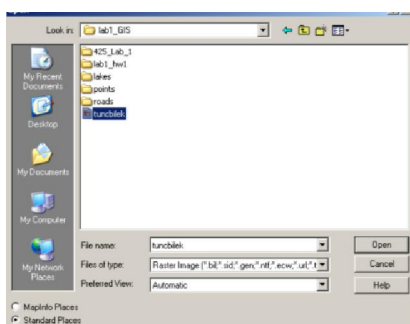
Map Units: Meter



3-Registering Satellite Images with GCPs. (ground control points)

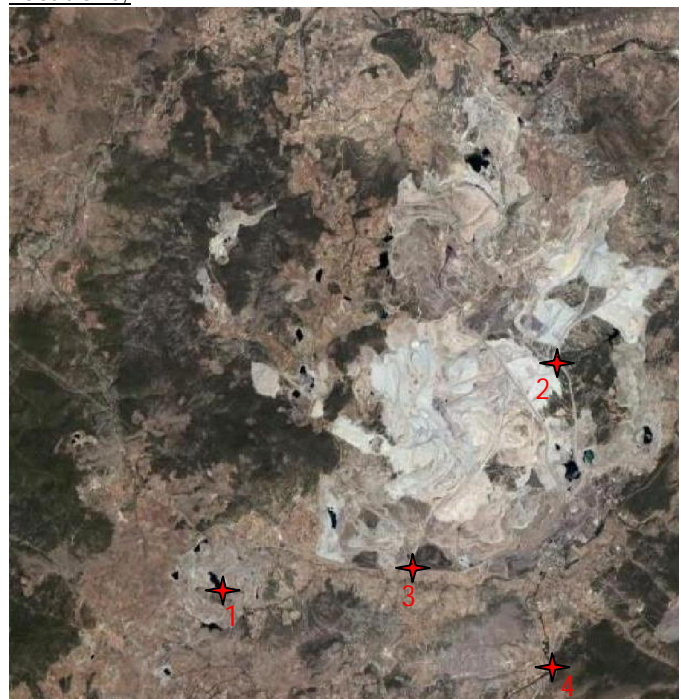
File> Open "tuncbilek.jpg" (choose raster image as
file type)

Preferred View: Current Mapper



Click Register

GCPs Locations:



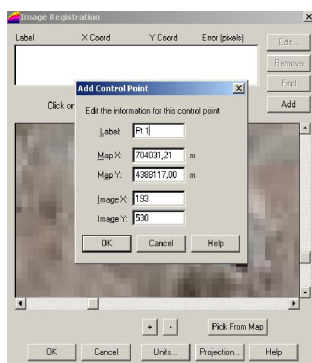
"Observe that there is not earth coordinate data related with the raster image."

Pick From Map> Add (for each point)
Zoom In + , Zoom Out –

Locate GCPs and assign coordinates below. You have to enter those coordinates to Map X and Map Y, Image X and Image Y are assigned by program automatically.

GCPs	EAST (X)	NORTH (Y)
1	704031,21	4388117,00
2	711305,15	4393486,07
3	708237,59	4388738,53
4	711402,29	4386580,08

For the first point;

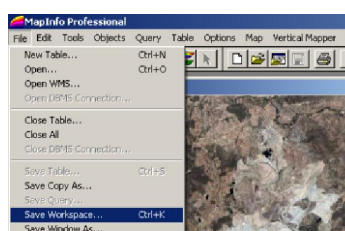


After entering all coordinates check error(in pixels), it has to be less than 1.

"Observe that a file tuncbilek.tab which has registration information created under the same directory. When you display tuncbilek.jpg there should be tuncbilek.tab file in the same directory with the file tuncbilek.jpg"

To see the coordinates of satellite image ;
Map> Options > Cursor Location

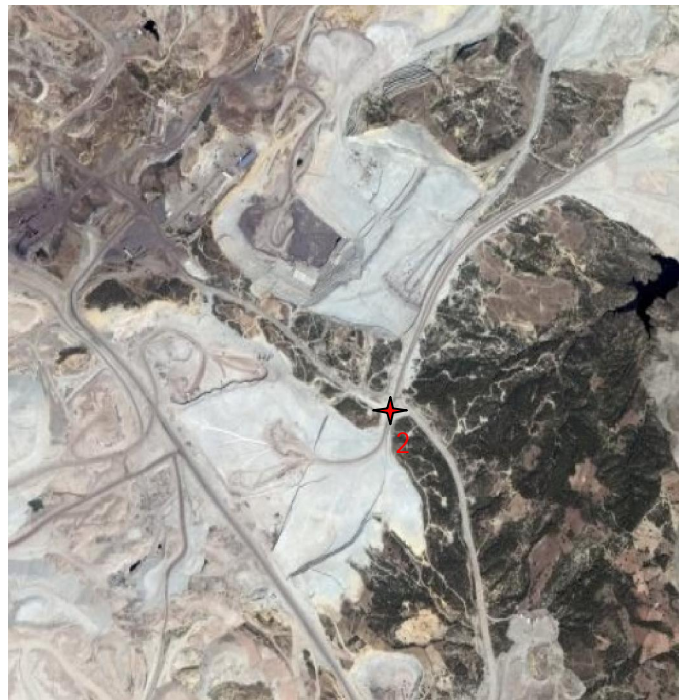
Projeyi kaydetme;
File> Save Workspace> Tuncbilekregister.wor



#1



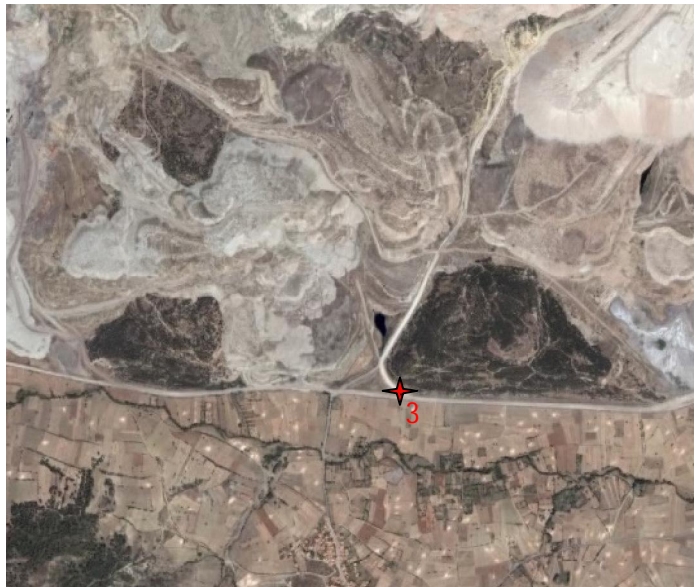
#2



#4



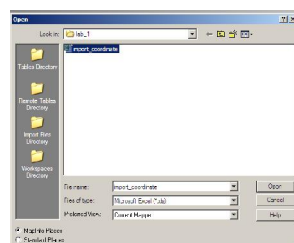
#3



4-Another way of creating point data (Importing x-, y-Coordinates to a Map)

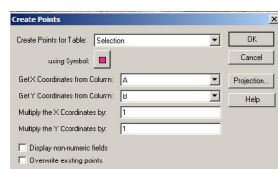
Open> Tuncbilekregister.wor

Open> import_coordinate.xls



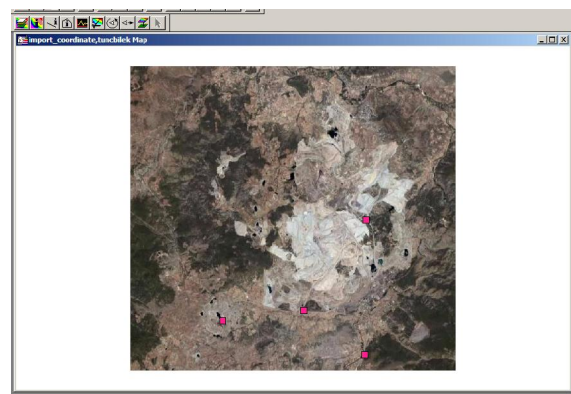
import_coordinate Browser			
A	B	C	
<input type="checkbox"/>	704.031,21	4.388.117	858
<input type="checkbox"/>	711.305,15	4.393.485,07	987
<input type="checkbox"/>	708.237,59	4.388.736,53	564
<input type="checkbox"/>	711.402,29	4.388.580,08	788

Table> Create Points



Open> import_coordinate.tab

You can obtain coordinates of a point by selecting this point and then press F7.



5-Creating Layers and Features for Layers

Creating Layers

Open> Tuncbilekregister.wor

File > New Table

Check projection (UTM WGS 84 Zone 36N)

Forest: (Polygon)

Type Character

Agriculture: (Polygon)

Crop_type Character

Mine & Dump Site: (Polygon)

Type Character

Roads: (Line)

Type Character

Residential_Area: (Point)

Type Character

Bare Land: (Polygon)

Type Character


Water: (Polygon) > Lakes and dams, not rivers

Type Character

Creating Layer Features

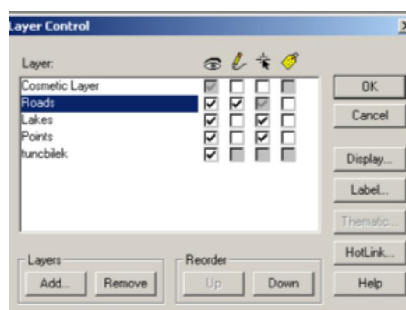
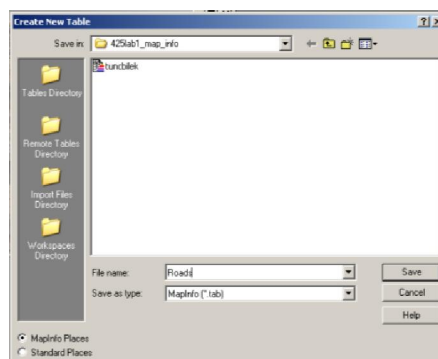
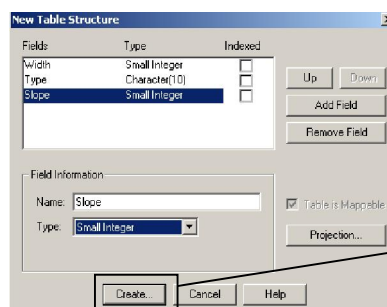
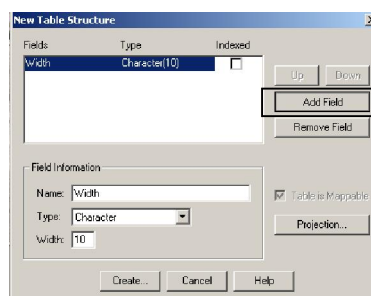
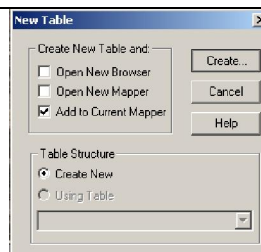
Right Click on map> Layer Control> Make Roads Layer Editable

Press Polyline 

Choose Line Style for polyline by pressing 
Mark the road by going through it. Finish drawing by double click.


Press  to enter the related field data.


When finished, press F2 to see related data for Roads layer.



Right Click on map> Layer Control> Make Residential_Area Layer Editable

Press Symbol 


Choose Symbol Style by pressing 
Mark buildings.


Press  to enter the related field data

When finished, press F2 to see related data for Residential_Area layer.

Right Click on map> Layer Control> Make Water Layer Editable

Press Polygon 

Choose Region Style for the polygon by pressing 
Mark the lakes or dams. Press S to activate **Snap mode**.

Press  to enter the related field data

When finished, press F2 to see related data for Water layer.

After finishing creating database; File> Save Table

**You can obtain area of a polygon or length of a line;
Select Item> Right Click> Get Info (F7)**



You will enter the related data to above table.

